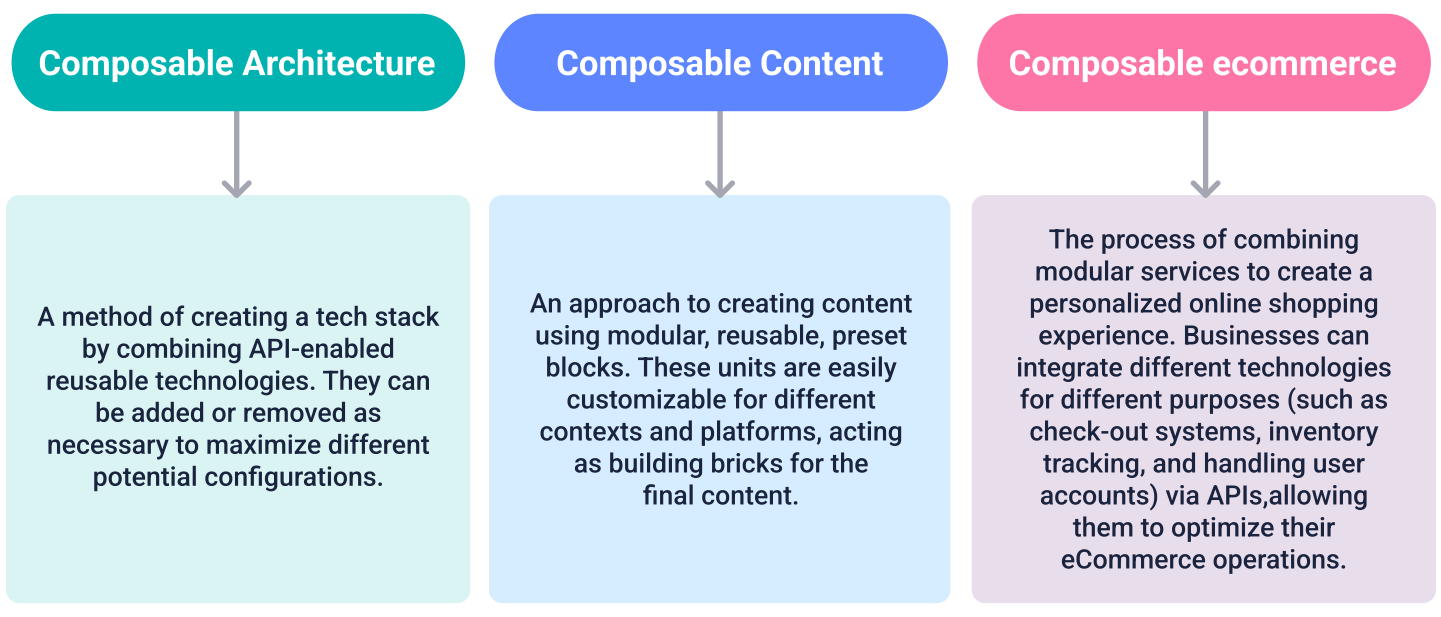
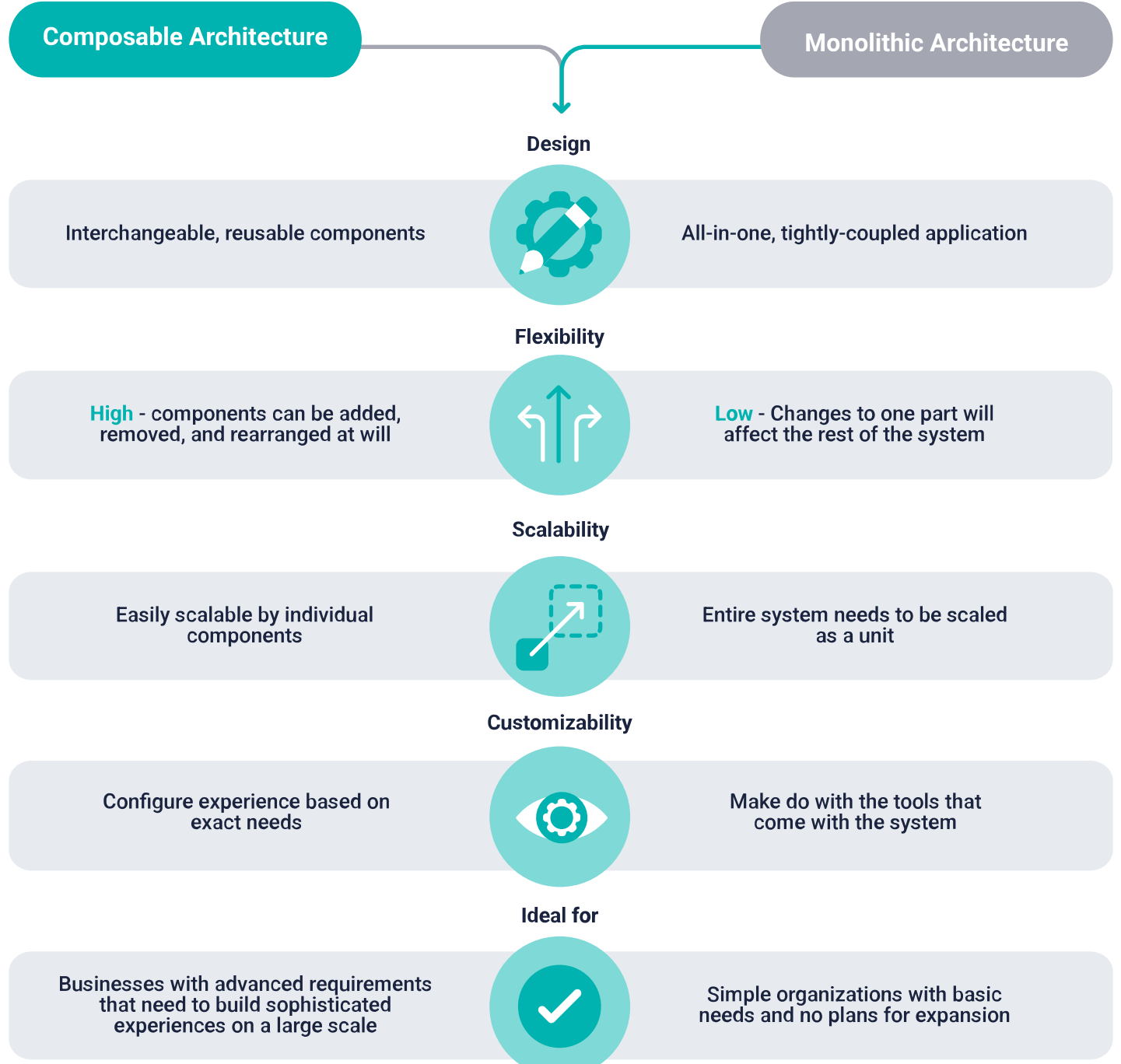
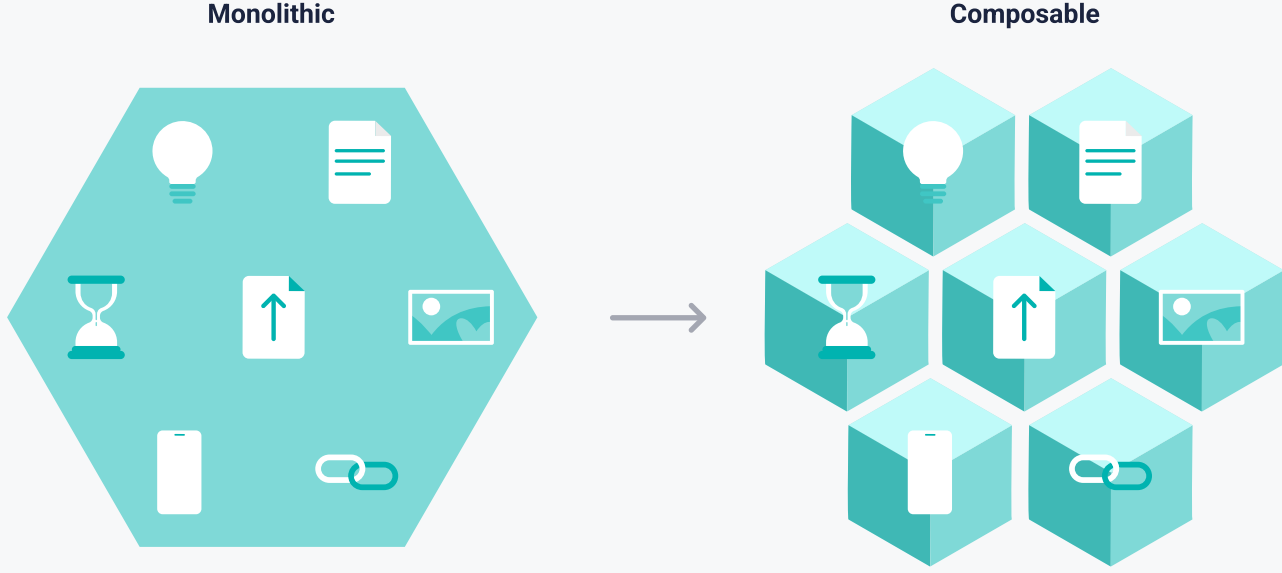


Composability 101: Composable Architecture, Composable Content, and Composable eCommerce explained



Composable vs Monolithic Architecture



GOOD TO KNOW: Microservice architecture is an approach to software development that involves breaking down a large application into smaller, independent services. Each service is responsible for a specific task or function, and communicates with other services through APIs. It's similar to composable architecture in its approach. However, while composable architecture focuses on the broad creation of entire systems, microservices focuses on breaking individual applications down into small, independently deployable services, usually designed for specific business capabilities.

Benefits of composability



How Composable eCommerce is Changing the Online Shopping Landscape

